



TRANSWAY

PLASTIC Co., Ltd.

Engineering Plastics 、 Plastic gear
Electronic Parts 、 Injection Molding
Plastic steel Mold 、 Design and Produce
Double Color Shaper 、 Nitrogen Filling Ejection



COMPANY PROFILE





Qualified Products, Punctual Delivery, Reasonable Price, and Excellent Service.

Nowadays, the plastic ejection products are popularly used in daily life, which is closely linked with our living. With the gradual change of the economic environment, we continue to develop new products, enhance the quality of the products, as well as introduce new technologies to meet quantity demands or high quality requirements on the products; and finally reach the world in the near future.)

Transway Plastic Co., Ltd was founded by President Mr. Jinzhong Lin, in March 1985, other information is as the followings.

Capital : US\$1,500,000

Annual Sales : US\$12,000,000

Employee : 125 persons ◦

Measure : 7,000 Meter Square ◦

Transway Plastic Co., Ltd professionally manufactures all kinds of engineering plastic parts, including the parts for sewing machine, machinery, gears, electronics, medical equipments, double-color and double-material ejection, special accessories for bicycle, energy-saving bulb and etc. We have equipped with varieties of engineering parts as well as wild experience in the production.

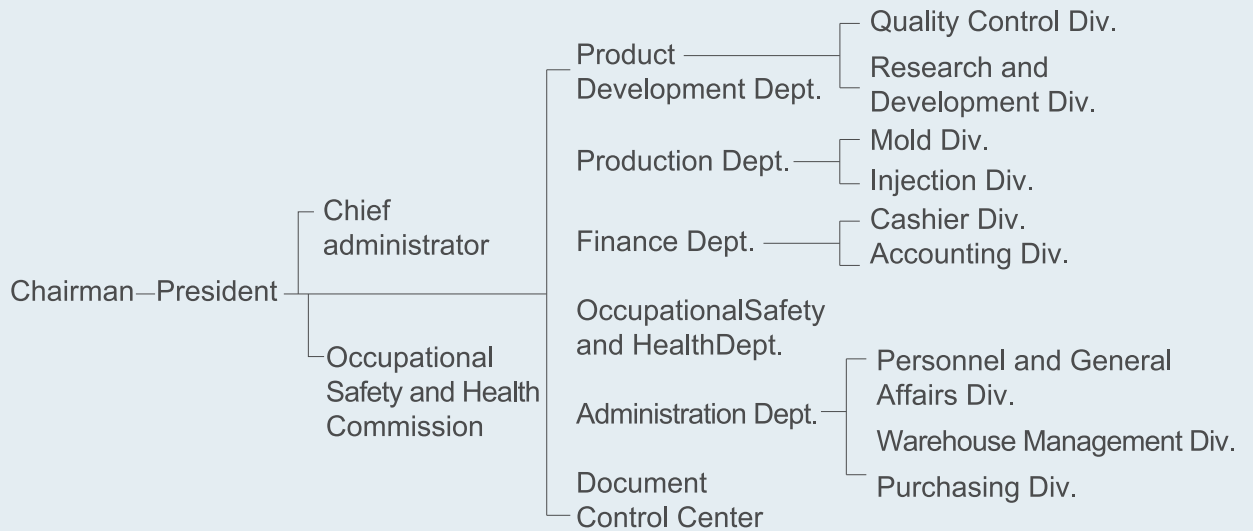
To begin with, in spite of our small-scale production, we insist on supplying customers with high quality, reasonable price and customer-oriented service.

As a result, we launched the expansion program in 1987; the following year, the molding department was set up. Later, to provide our customers with better and efficient service, our factory moved into the Da Li Industrial Park and built up a new workshop in 2000.

For 28 years, We have been carrying on innovation and development, accumulated rich experience in the production of all types of engineering plastic products. In the future, we will continue to serve our clients with "Qualified Products, Punctual Delivery, Reasonable Price, and Excellent Service". We warmly welcome your opinions and suggestions, which is the impetus for our sound and healthy growth. We keep the faith of protecting environment, in order to make the living things in the earth have longer lives. Therefore, all raw materials that we use are non-toxic and free environmental pollution. We import RoHS tester to exam our product, customer can trust us to produce their product.



Organization Structure



Product & technology

Product

Engineering plastic parts: We are the experts in producing all kinds of engineering plastic parts. Ex:

- a. The parts of sewing machine
- b. The parts of machinery
- c. The parts of electronics
- d. The parts of medical equipments
- e. The parts of special accessories for bicycle
- f. The parts of energy-saving bulb

Technology

- a. Ejection
- b. Plastic Steel Mold
- c. Double Color Shaper
- d. Nitrogen Filling Ejection: High Pressure Nitrogen Gas Filling and Ejection solve the problem of shrinkage, distortion and long cycle of the thick and solid parts as well as strengthen the intensity of the products.

Design, Development, and Produce Process



To provide our customers with better and efficient service, we set up the molding department in 1988. At present, we have set up Administration Department, Sales Department, Molding Department, Developing and Forming Department. Our professional team is ready for providing perfect service for customers, such as design, 3D construction, development and operation, production, quality control and technical analysis.

We can not only manufacture products with customers' product drafts and mold drafts, but also can manufacture products with Reverse engineering and Rapid Prototyping (we will appoint professional makers to do RE and RP for us). Moreover, if customers have any idea about products, we can discuss each other, and then we can develop, design and produce the products for customers.

The information of Reverse engineering and Rapid Prototyping is as bellow :

Reverse engineering, RE

Traditionally, the 3D mimic milling machine copies the shapes of samples, and produces a full scale mold, and then makes mass production. This kind of copy process is Analog type copy. It cannot rebuild engineering data nor revise shape. Presently digital Reserve engineering system with 3D digitizer measures surface profiles to get 3D digital data quickly and precisely. From 3D digital data, engineers can rebuild, edit, and revise surfaces to get 3D models which can import to CAD/CAM system. With 3D models, engineers can create NC tooling path in CAM system and pass the NC tooling path to CNC machine or Rapid Prototyping system. Finally, CNC machine or Rapid Prototyping system make the mold to mass manufacture product. These processes are called reserve engineering.

Rapid Prototyping, RP

Rapid Prototyping is used to fabricate physical objects directly from CAD data sources, such as Pro/E or I-DEAS of 3D Solid model. Solid model CAD data transfers to STL data which is a triangular mesh of solid model. Then RP system layers the triangular mesh model and re- prints them layer by layer to build up the final model.

Now the academic and industry use RP technology a lot. The benefits of RP technology are fast, convenient, low skillful and tooling any shape of product. The products made with Rapid Prototyping can be used widely, as the way of reviewing the design effect, checking the sample and the model of , etc. Now the high payroll of industrialized countries accepted RP system to replace the traditional manufacturing.

The process of Development, Design, and Production

Design→3D construction→development and operation→production→quality control→technical analysis.

Manufacture Machinery

There are three parts of equipment : machine, tester, and the equipment of producing mold.

Machine

1. Central Feeding System : Central Feeding System can save the labor cost and avoid the mistakes.
2. Ejection machine: 41 sets of ejection machine; 25 of sets general ejection forming machines (50~1300 ton press), and 16 of sets double-color forming machines (50~300 ton press). Double-Color Ejection Machine: which were imported in 2000, guarantee the double-color material a stable character, which the quality can reach the quality standard of products from Europe and US; supplying customers with reasonable price and excellent parts.

Tester

1. projector
2. cubic computer tester
3. Height gauge
4. gear tester with shape of gear tooth
5. pinion slanting tester
6. Tensile Testing Machine
7. RoHS Tester: test and examine the products and material which are toxicant or not.

Machine of producing mold

1. Milling Machine
2. Lathe
3. Grinding Machine
4. Electric Discharge Machine
5. Segmenting Machine
6. Grinder
7. Precision Laser Welder Machine
8. TIG welding machine

Customers' Service

We always serve our clients with "Qualified Products, Punctual Delivery, Reasonable Price, and Excellent Service". In order to mutually clients smoothly, we have services as follows :

1. Before process : We can save your cost, like suggest you the producing and shaping technology etc., to meet your propose to reduce the unnecessary cost.
2. Process : To decrease unnecessary process, provide samples and make clients confirm, in order that clients can receive the products quickly and correctly.
3. After sales service : We will follow up and review the products. Moreover, we will provide the manual of trouble shooting for clients' reference.





Jig Molds



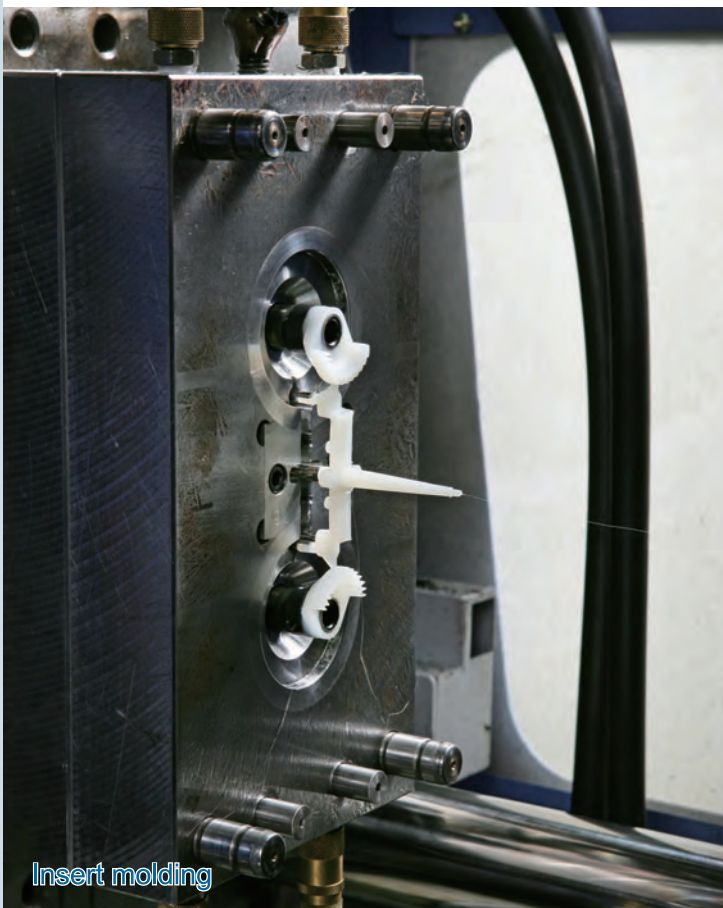
Jig Molds



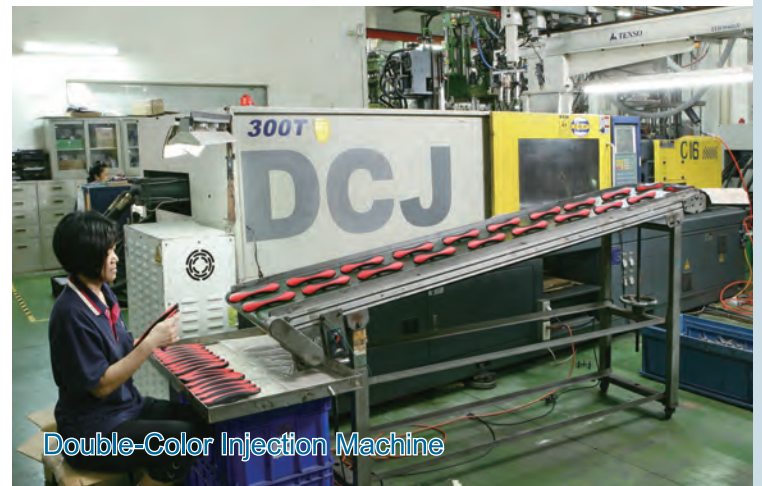
Raw Material Storage



Central Material Feed System



Insert molding



Double-Color Injection Machine



Color Injection Machine



TRANSWAY PLASTIC Co., Ltd.

ADD : No.98,9th Industry Road,Ta-Li Industrial Park,
Ta-Li City,Taichung Hsien 412,Taiwan,R.O.C

TEL :+886-4-2260-5248 FAX :+886-4-2260-6140

E-MAIL : rita@heiseitrading.com.tw

Website : www.transway.tw

Please contact with Ms.Rita (For English service)